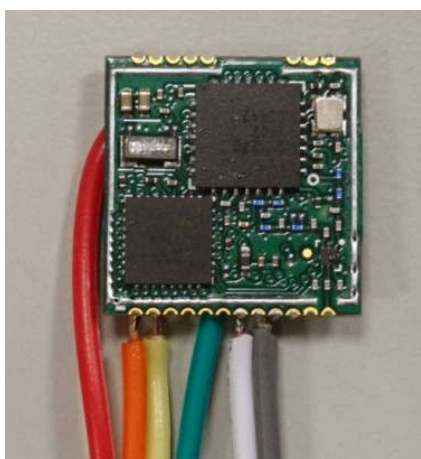
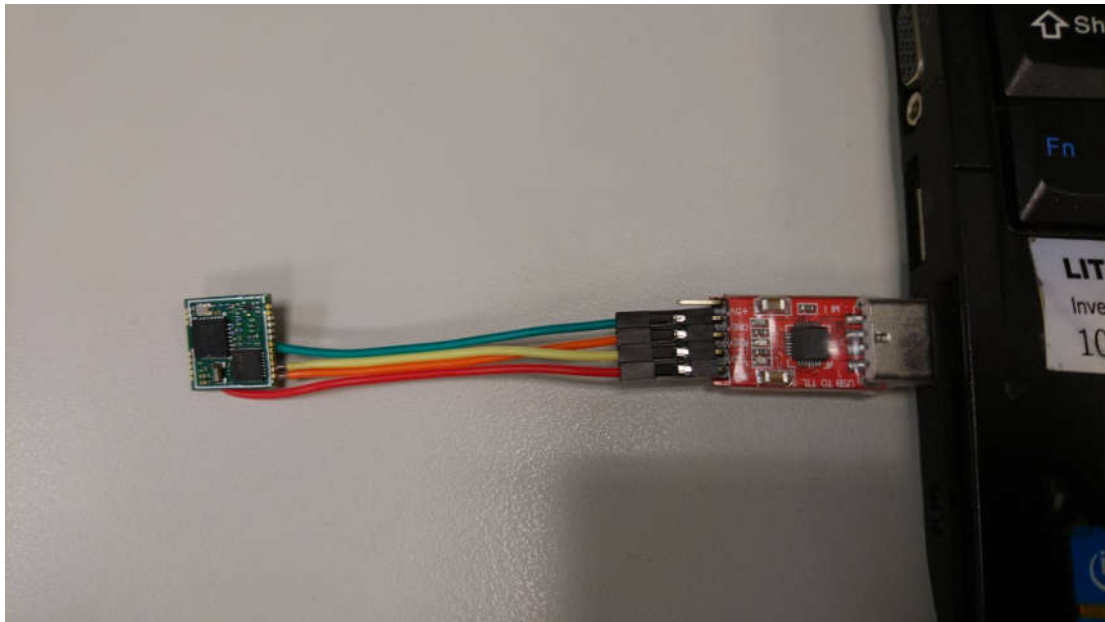


WSL304S AT command user guide

1. Connect to NB/PC by UART to USB board.



UART (Module side)			
紅色	橘色	黃色	綠色
3.3V	RX	TX	GND

燒錄 PIN	
白色	灰色
SYS_SWDIO	SYS_SWCLK

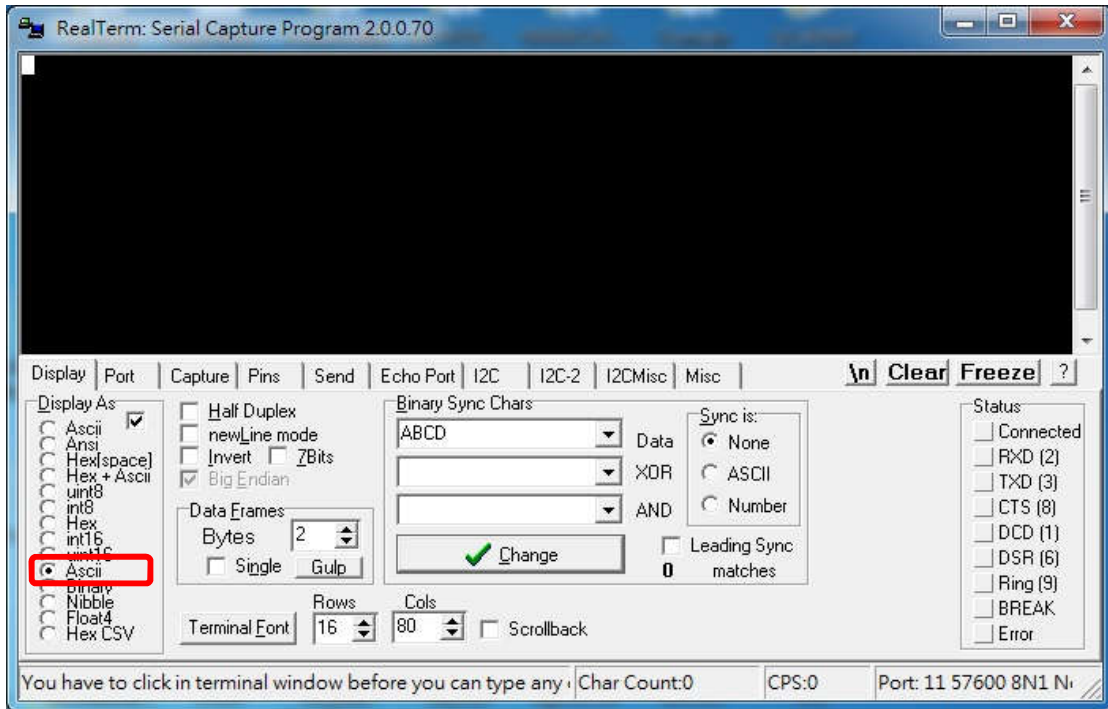
2. Check the COM port number under device manager.



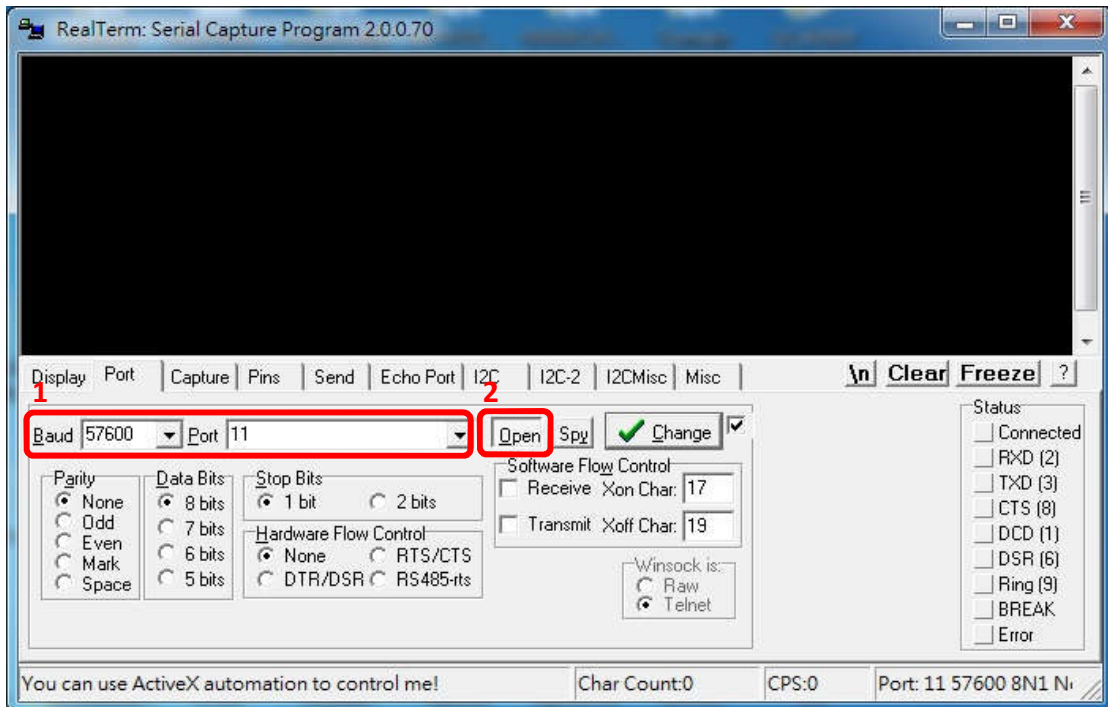
3. Install and run "Realterm."



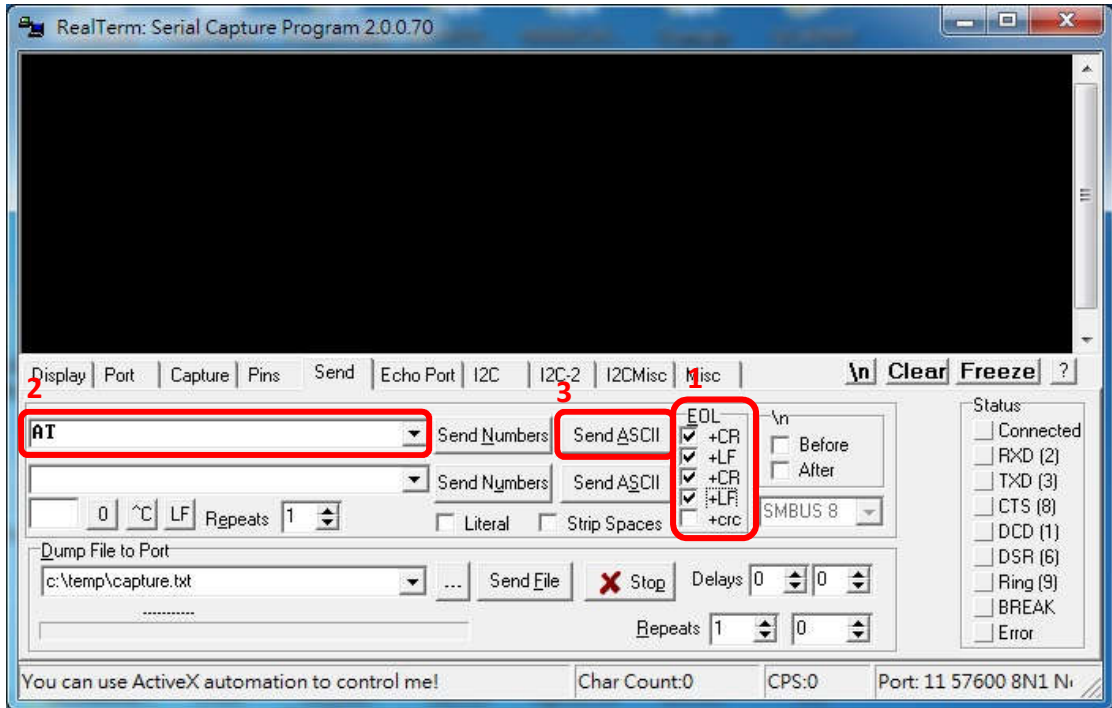
4. Select Display => Ascii.



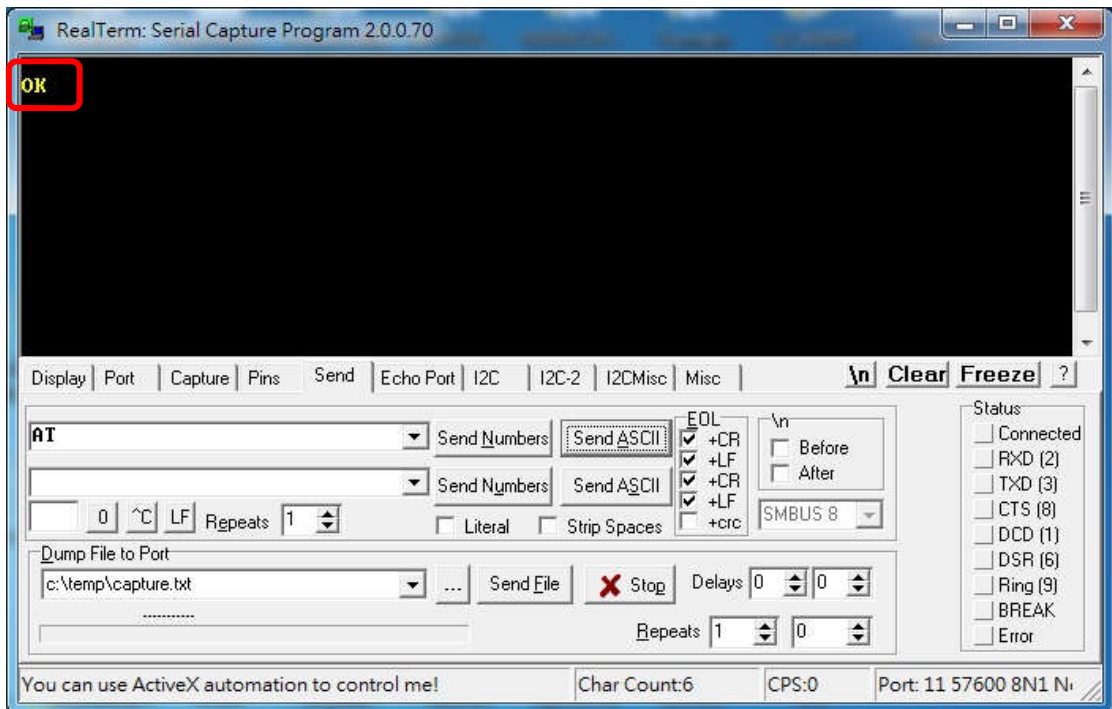
5. Select COM port and Baudrate and then click "Open".



6. Check the box +CR, +LF, +CR and +LF.
Keyin "AT".
Click "SendASCII".

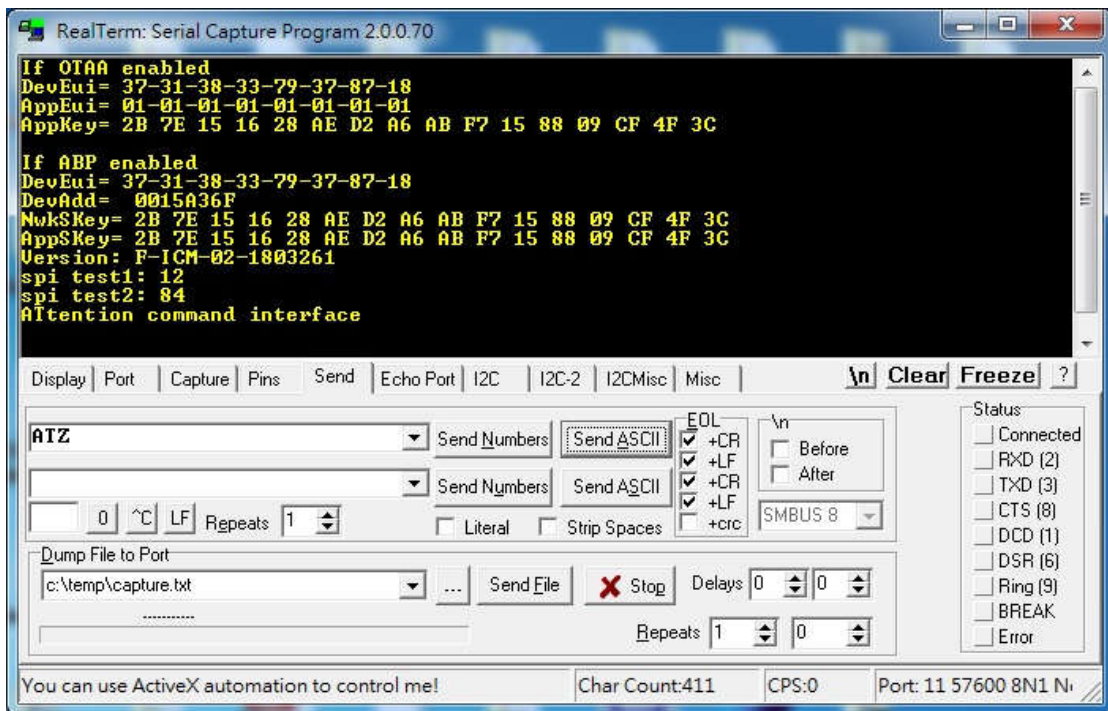


7. Shows "OK" if successful. (回傳"OK"表示模塊通信正常)

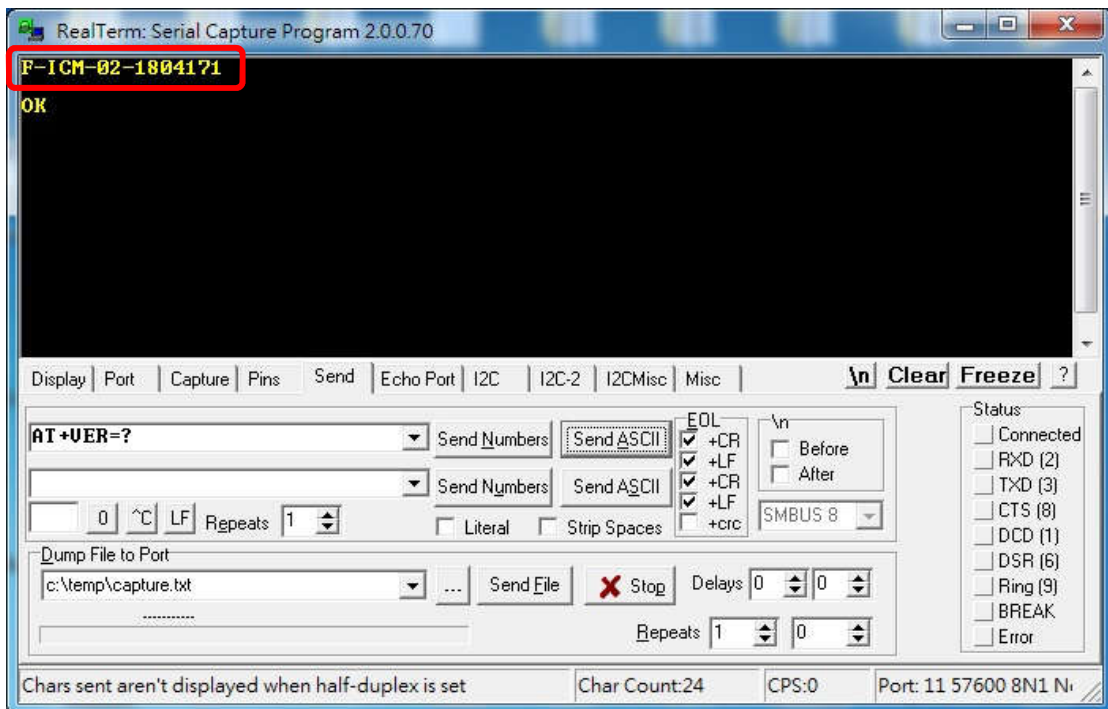


8. Example.

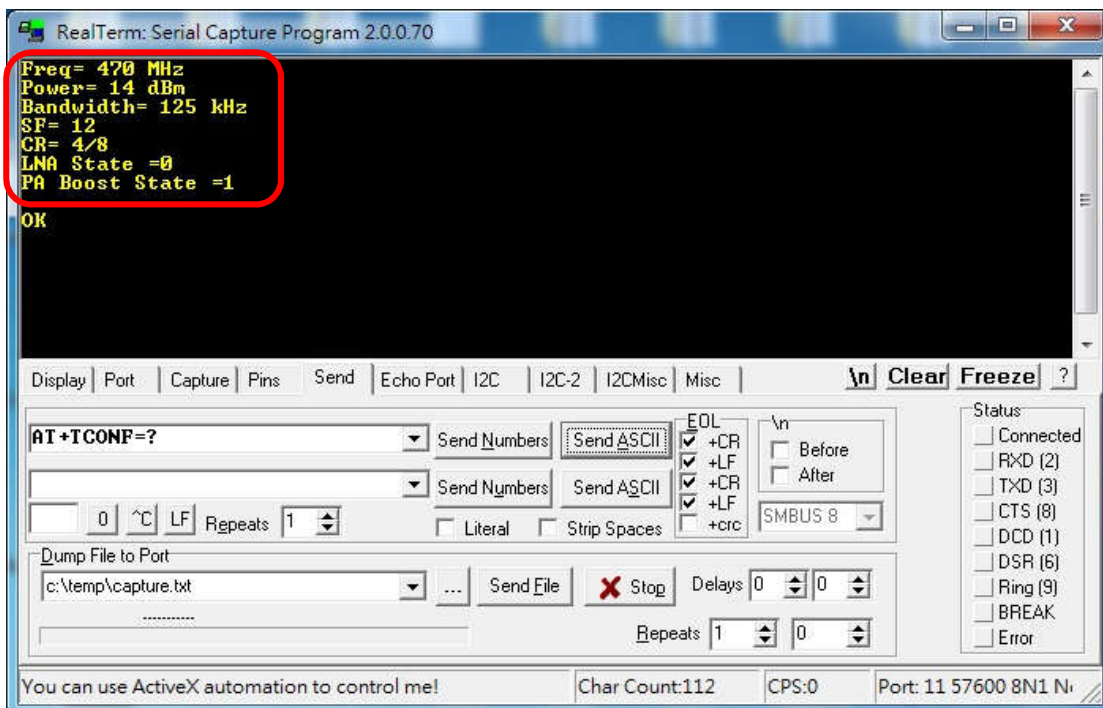
Keyin “ATZ” 檢視模塊資訊



Keyin “AT+VER=?” 檢視模塊 FW 版本



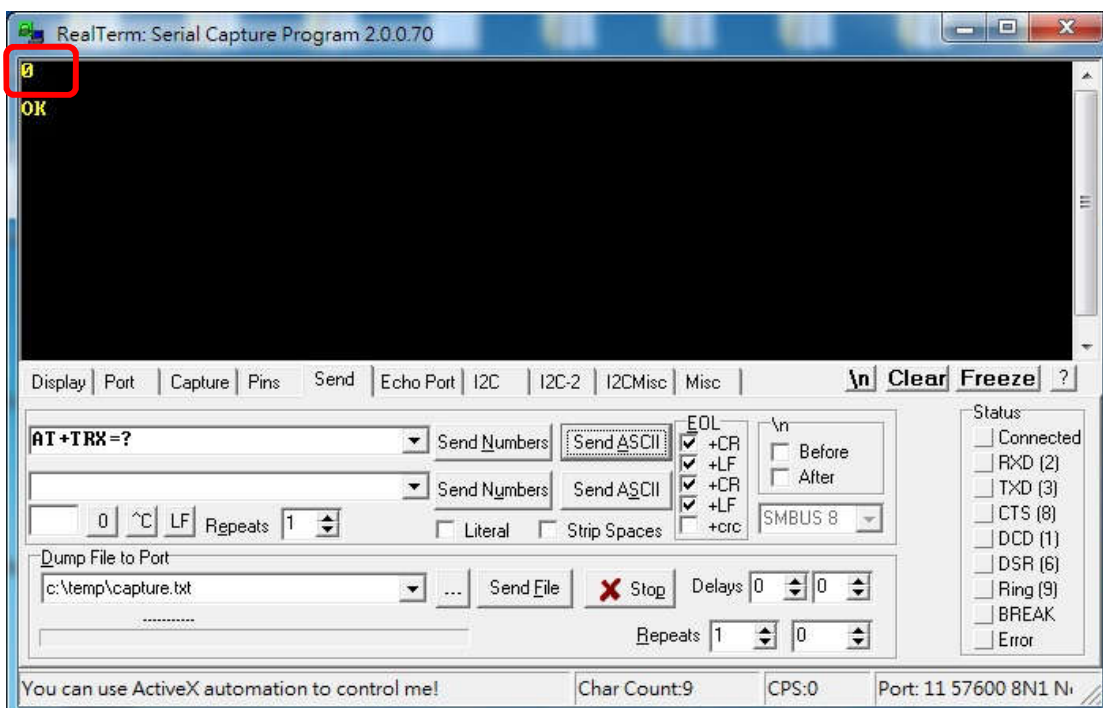
Keyin “AT+TCONF=?” 檢視模塊 TX power 配置



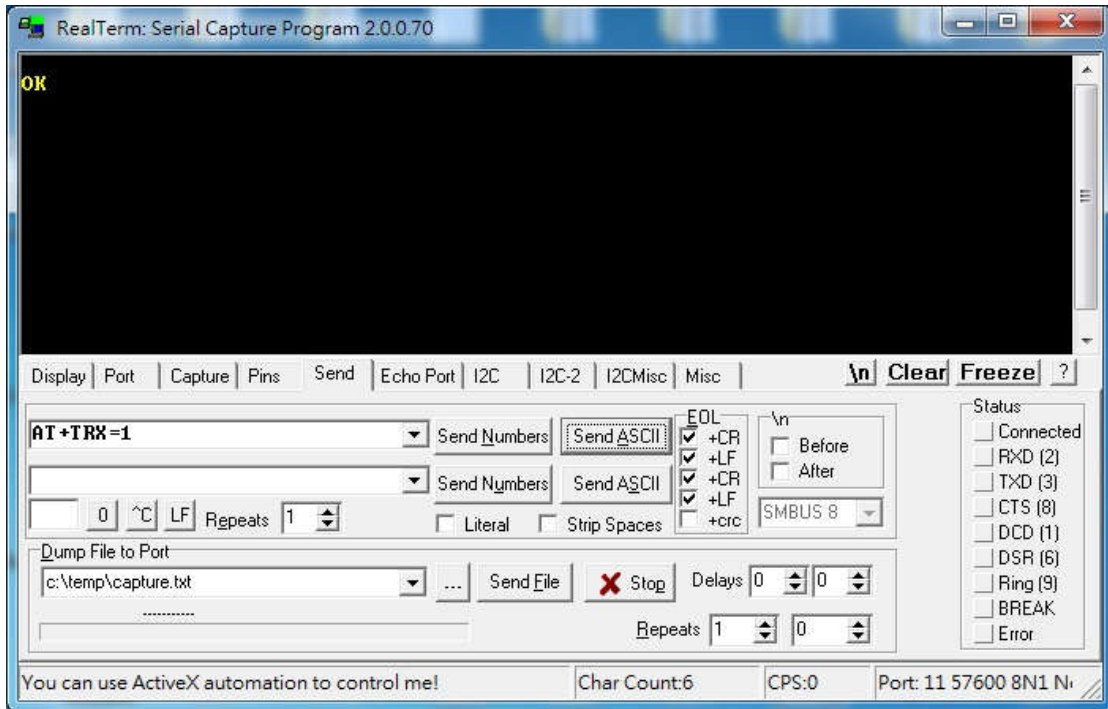
Keyin “AT+TRX=?” 檢視模塊 RX1 frequency 配置, 初始設定為 0

“0”: RX1=TX+30MHz

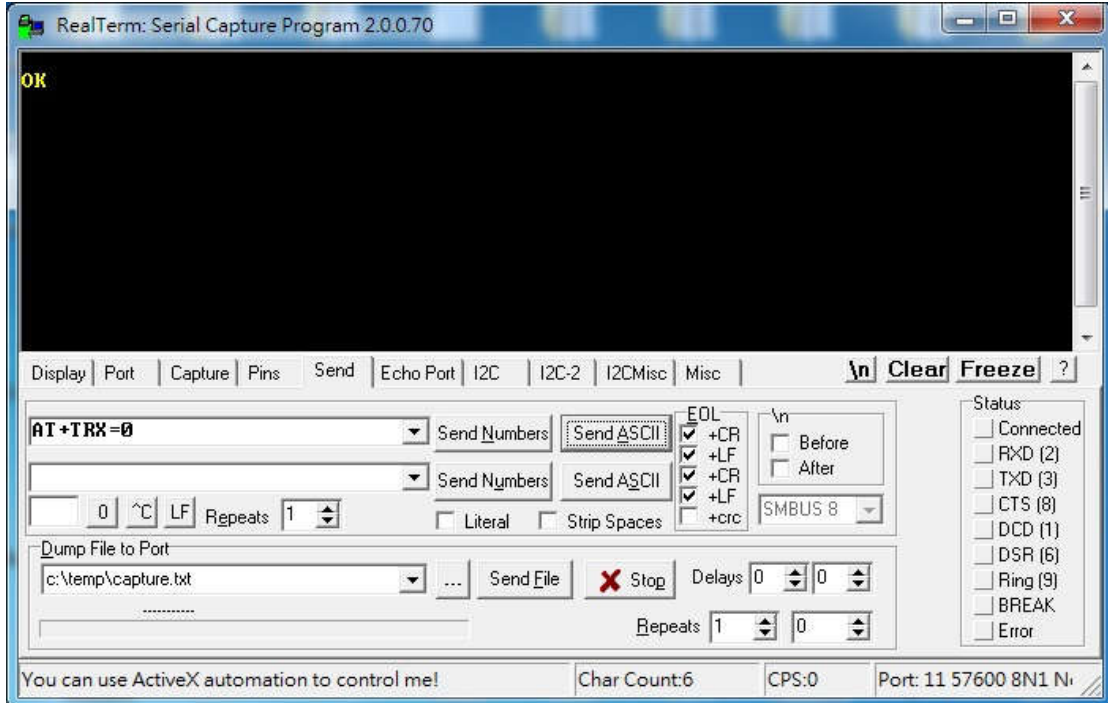
“1”: RX1=TX



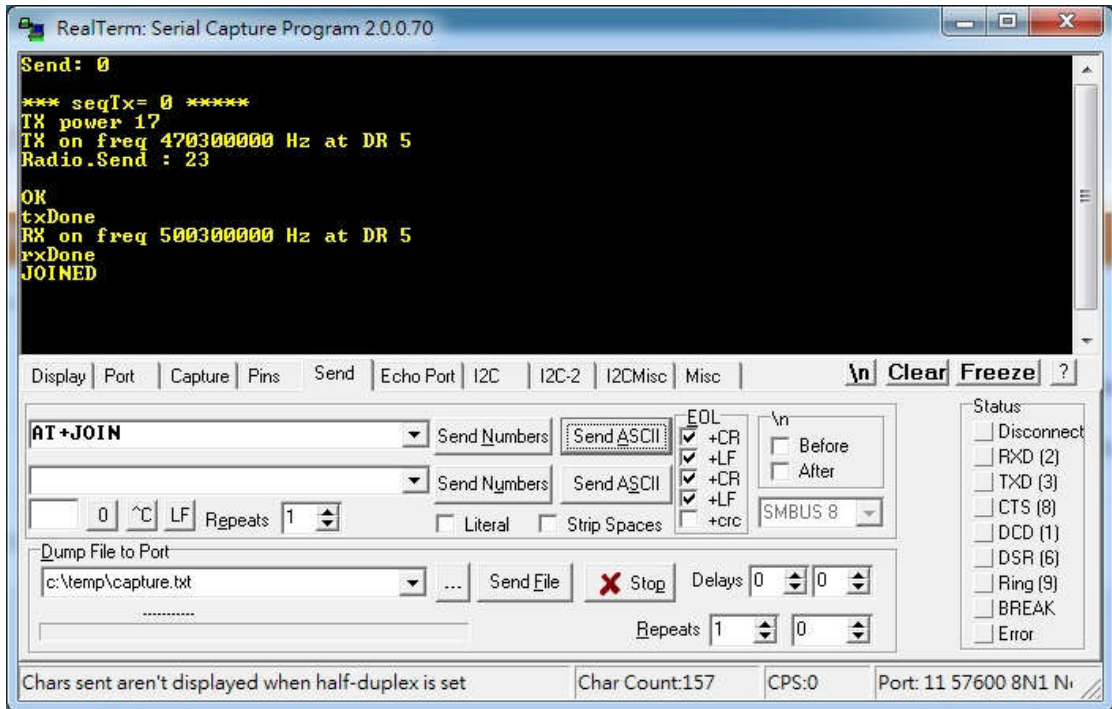
Keyin “AT+TRX=1” 修改模塊 RX1 frequency 配置為 1(RX1=TX)



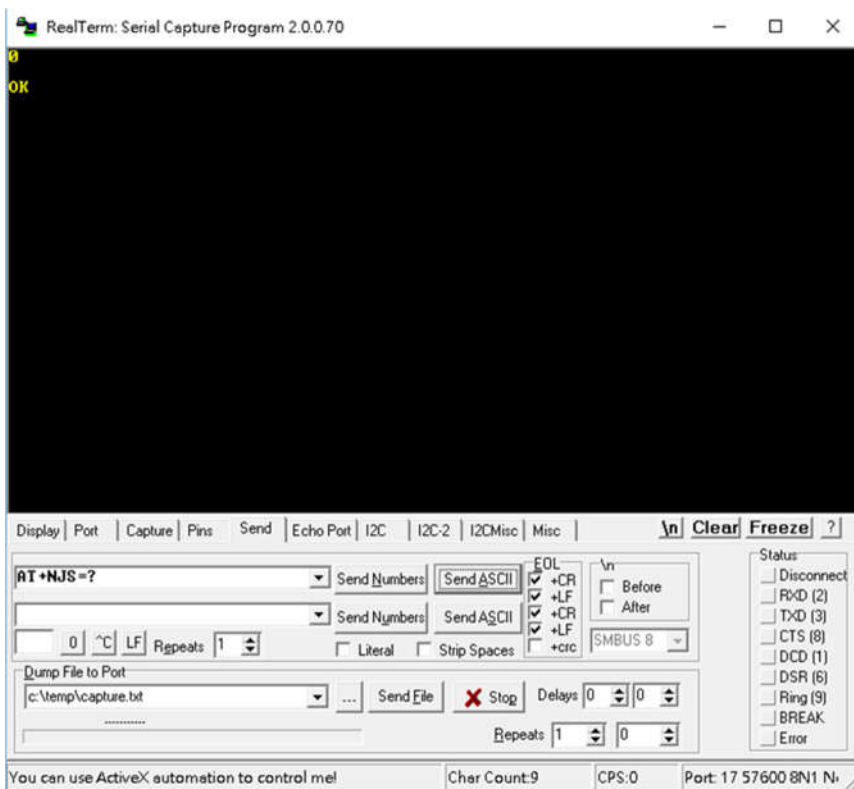
Keyin “AT+TRX=0” 修改模塊 RX1 frequency 配置為 0(RX1=TX+30MHz)



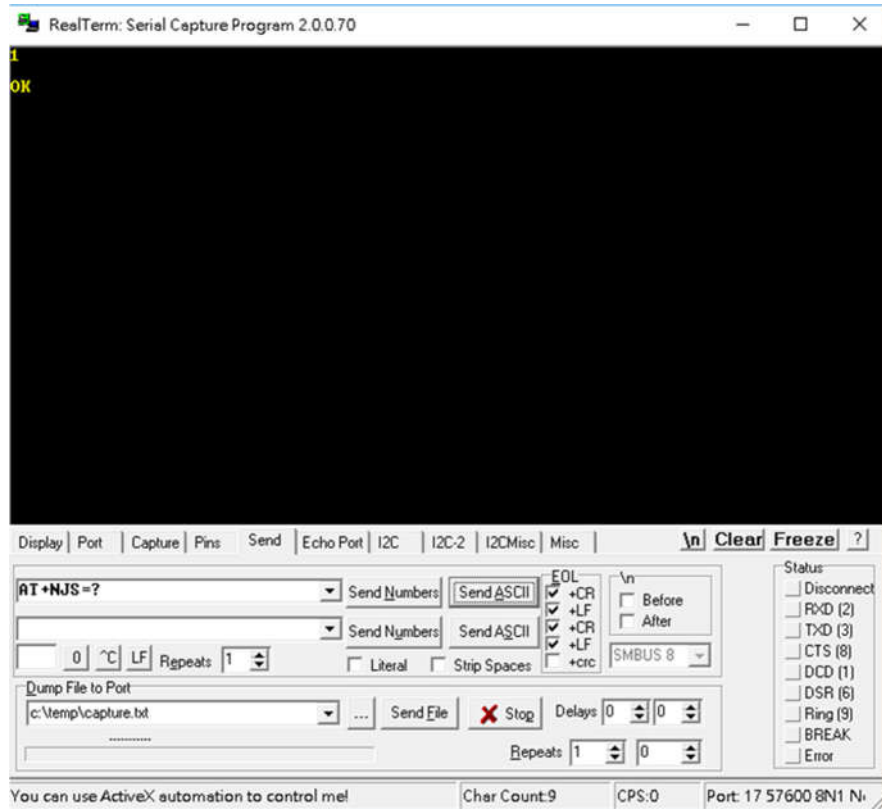
Keyin "AT+JOIN" 回傳"JOINED"表示與 gateway 連結成功



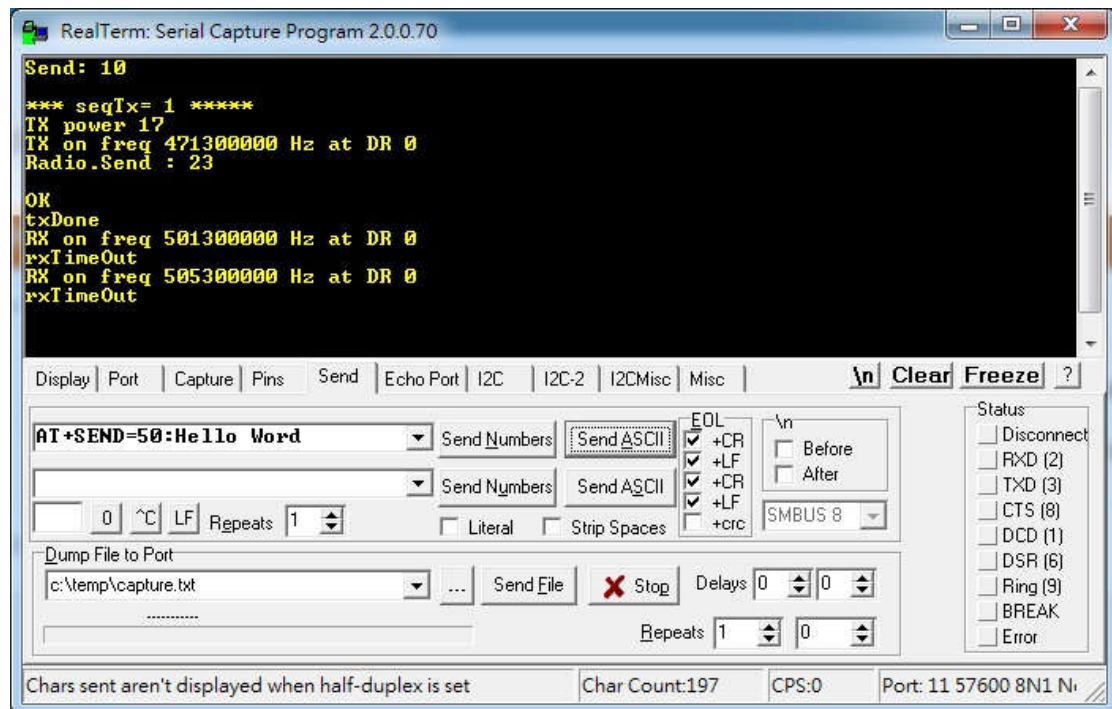
Keyin "AT+NJS=?" Return 0 Network is not joined yet



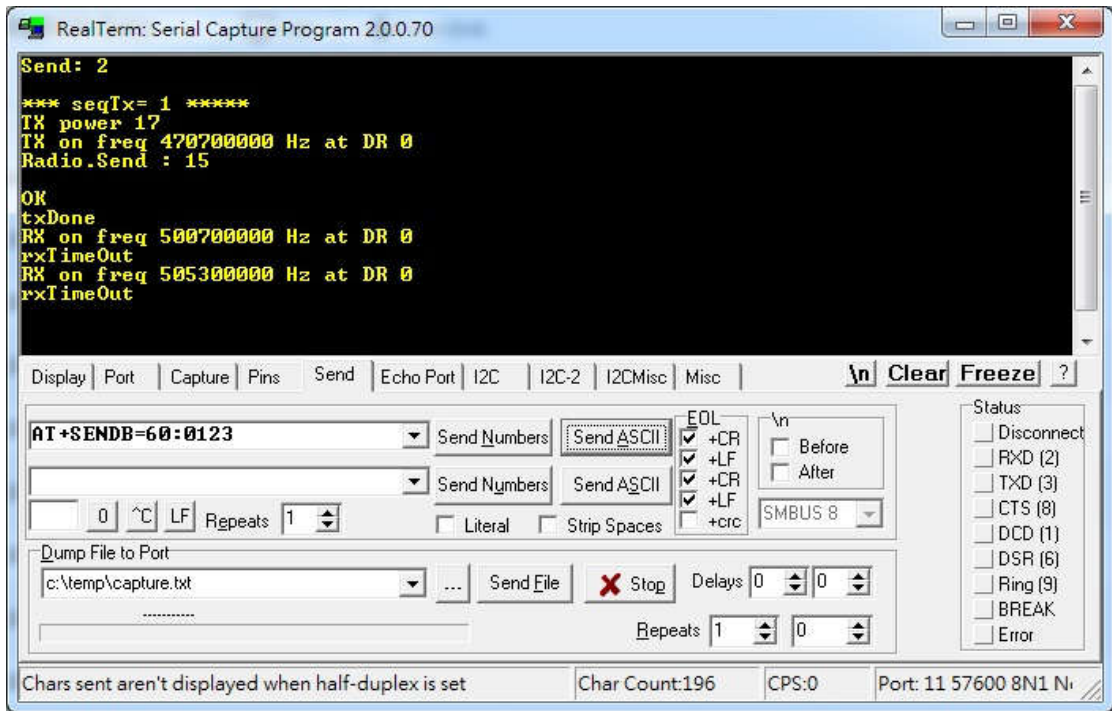
Keyin "AT+NJS=?" Return 1 Network is now joined



Keyin "AT+SEND=50:Hello World"

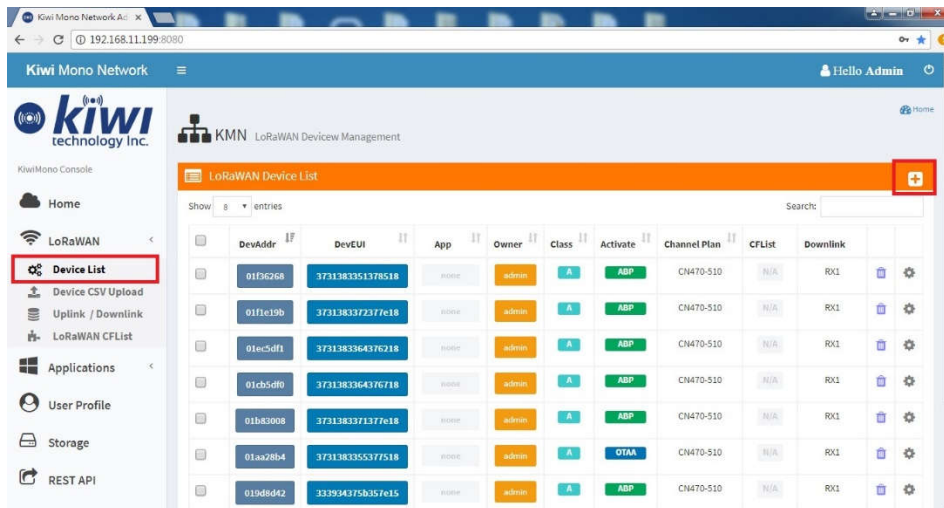


Keyin "AT+SENDB=60:0123"

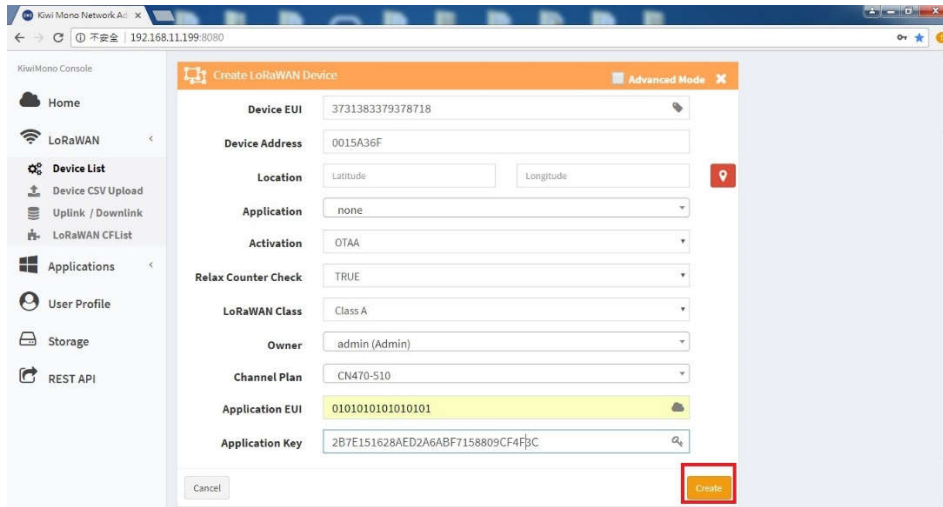


Gateway 端

1. 必須先增加 Device.



2. 填入 Device EUI 等資訊後點擊“Create”



3. 可以確認是否有傳輸成功

